

Abila Nonprofit Online



Connection Guide

abila™

This is a publication of Abila, Inc.

Version 1.x

© 2014 Abila, Inc. and its affiliated entities. All rights reserved.

Abila, the Abila logos, and the Abila product and service names mentioned herein are registered trademarks or trademarks of Abila, Inc. or its affiliated entities. All other trademarks are the property of their respective owners.

Your use of this document and the Abila product(s) described herein is governed by the terms and conditions of the Abila End User License Agreement (“EULA”) or other agreement that is provided with or included in the Abila product. Nothing in this document supplements, modifies or amends those terms and conditions. Except as expressly stated in those terms and conditions, the information in this document is provided by Abila “AS IS” and Abila disclaims all express, implied or statutory warranties of any kind, including but not limited to the warranties of merchantability, fitness for a particular purpose or of non-infringement. No implied license is granted to you under any Abila intellectual property or trade secret right. Abila reserves the right to revise, supplement or remove information in this document at any time without notice to you or others.

Contents

Welcome to Abila Nonprofit Online	4
Overview	4
Which Method Should I Use?	4
System Requirements	5
Other Requirements	6
Obtaining the Remote Desktop Client	6
Setting a Group Policy to Prevent Remote Application Warnings	7
Connecting to the Portal Using Internet Explorer	10
Setting IE Browser Options for Abila Nonprofit Online	10
Connecting to the Portal from the Browser	13
Connecting to the Portal with a Remote Desktop Application	14
Setting Up the Native Remote Desktop Application (Windows 7)	14
Setting Up the Remote Desktop Client on a Windows Computer	15
Setting Up the Remote Desktop Client on an Apple Mac or iOS Mobile Device	16
Setting Up the Remote Desktop Client on an Android Mobile Device	17

Welcome to Abila Nonprofit Online

Welcome to Abila Nonprofit Online. Use the information in this document to connect to Abila Nonprofit Online from your computer, tablet, or mobile device. The set up for your connection will vary depending on the operating system and device you choose.

Overview

There are two ways to connect to Abila Nonprofit Online:

- Use Microsoft Internet Explorer to open the Abila Nonprofit Online product portal, and the Windows Remote Desktop Protocol (RDP) to connect to the Abila applications. This method requires little setup, but you must use IE version 8 or later to access the portal. This method enables single sign-on using ActiveX and provides a central location for all of the Abila applications.
- Use the Microsoft Remote Desktop Client to launch the products from a workstation or mobile device. This method requires that you install and configure the Microsoft RDC application, but provides an alternative if you cannot use the Microsoft IE browser to connect to the portal. For example, you can use this method to connect to the portal with an Apple computer, iPad, or Android tablet.

Which Method Should I Use?

Use the following table to help you choose how to connect to Abila Nonprofit Online:

Device	Operating System	You Can Connect to Abila Nonprofit Online Using...		
		Internet Explorer and Remote Desktop Protocol	Native Remote Desktop Application	Microsoft Remote Desktop Client
Windows Computer	XP 3	✓		
Windows Computer	V7	✓	✓	
Windows Computer	V8	✓	✓	✓

Device	Operating System	You Can Connect to Abila Nonprofit Online Using...		
		Internet Explorer and Remote Desktop Protocol	Native Remote Desktop Application	Microsoft Remote Desktop Client
Windows Server	2008 or 2012	✓	✓	✓
Apple Computer	Mac OS X version 10.5.8 or later			✓
Mobile Device (iPhone, iPad or Android phone or tablet)	iOS 6 or later Android 2.3.4 or later			✓

System Requirements

The following devices, operating systems, browsers, and tools are supported:

- Operating System: Microsoft Windows XP SP3 or higher. Windows Version 8 or later is required to use the Microsoft Remote Desktop Client.
- Browser: Microsoft Internet Explorer (IE) Version 8 or higher. Note that IE 10 or later must run in Compatibility mode to access the site.
- The Microsoft Remote Desktop client if you plan to connect from a Windows Version 8 computer, an Apple computer, or from a tablet or other mobile device. You can also use the Remote Desktop client as an alternative to the IE browser on a Windows computer.
- If you use the Microsoft Remote Desktop client, your device or computer must meet the system requirements for that application, and you must download it and install it on your device. See [Obtaining the Remote Desktop Client](#) for more information about downloading the application.

Other Requirements

In addition to the system requirements, the following considerations also apply when you access Abila Nonprofit Online:

- **Single Sign-On**—Abila Nonprofit Online uses a single sign-in system for most applications. The following Abila applications require a separate user name and password. If you do not have credentials for these applications, contact your Professional Services representative.
 - Grant Management
 - Abila Fundraising Online
 - Employee Web Services
- **Browser Security Settings**—If you use Microsoft IE to access the portal, you must adjust the browser security settings as follows. See [Setting IE Browser Options for Abila Nonprofit Online](#) for more information.
 - Active X must be enabled (Run ActiveX Controls and plug-ins=Run or Prompt). If ActiveX is set to Prompt, you must allow ActiveX to run before you sign in to Abila Nonprofit Online. Use **Control Panel>Internet Options>Security>Custom Level** button to change the ActiveX settings.
 - If the Privacy settings in IE are set to High, you must edit the **Per Site Privacy Action** to Allow for the **abilaonline.com** domain. Use **Control Panel>Internet Options>Privacy tab>Sites** button to add **abilaonline.com** to the allowed sites.
 - You must include the **abilaonline.com** domain as a Trusted Site.
- **Browser Compatibility**—If you use IE Version 10 or later, you must set the browser to run in Compatibility mode to connect to the Abila Nonprofit Online portal.

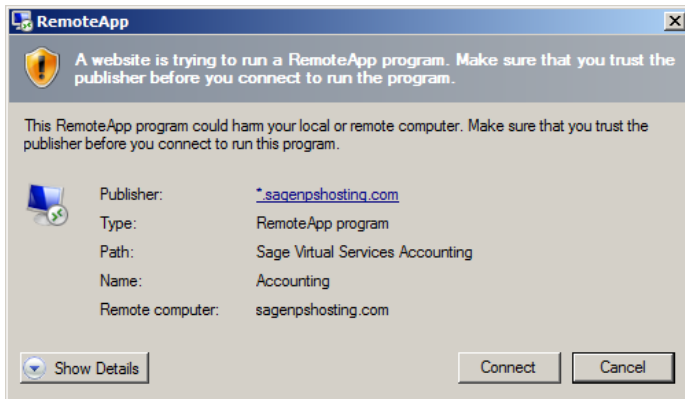
Obtaining the Remote Desktop Client

The way you obtain the Remote Desktop client depends on the device you are using to connect to Abila Nonprofit Online. The following table shows where you can download the appropriate software for your device.

Device Type	How to Obtain Microsoft Remote Desktop Client	Setup Instructions in this Document
Windows desktop computer	The Remote Desktop is already installed on Windows workstations.	Setting Up the Remote Desktop on a Windows V7 Computer Setting Up the Remote Desktop on Windows 8 or Windows Server 2012
Apple Mac computer	Download the Microsoft Remote Desktop Connection Client for Mac from the Microsoft Download Center.	Setting Up the Remote Desktop on an Apple Mac or iOS Mobile Device
Apple iPhone or iPad	Download the Microsoft Remote Desktop app from the iTunes App Store.	Setting Up the Remote Desktop on an Apple Mac or iOS Mobile Device
Android phone or tablet	Download the Microsoft Remote Desktop app from Google Play.	Setting Up the Remote Desktop on an Android Mobile Device

Setting a Group Policy to Prevent Remote Application Warnings

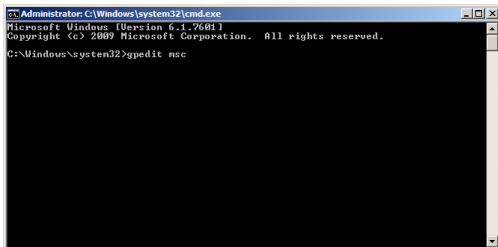
When you launch an Abila application using Abila Nonprofit Online, a RemoteApp warning appears.



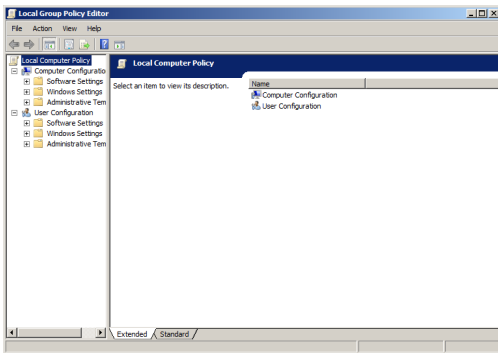
This is a normal message that alerts you when a web site attempts to run an application on your desktop. You can prevent this message from launching every time you open an Abila Nonprofit Online application by setting a Group Policy that allows the abilaonline.com domain to launch applications without warning on your desktop.

Use the following steps to set up a Group Policy that will prevent the remote application warnings for Abila Nonprofit Online:

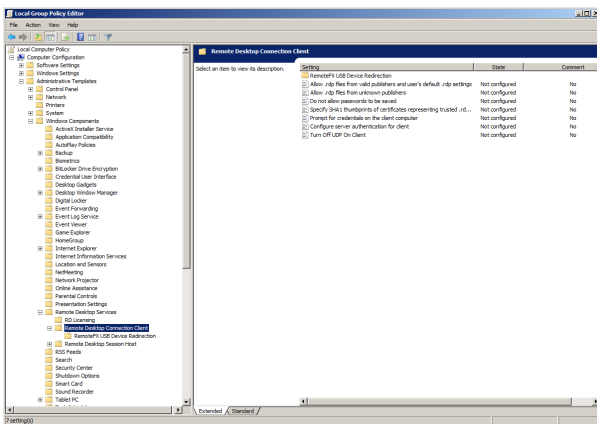
1. Open a command window and type: `gpedit.msc`. Then press Enter.



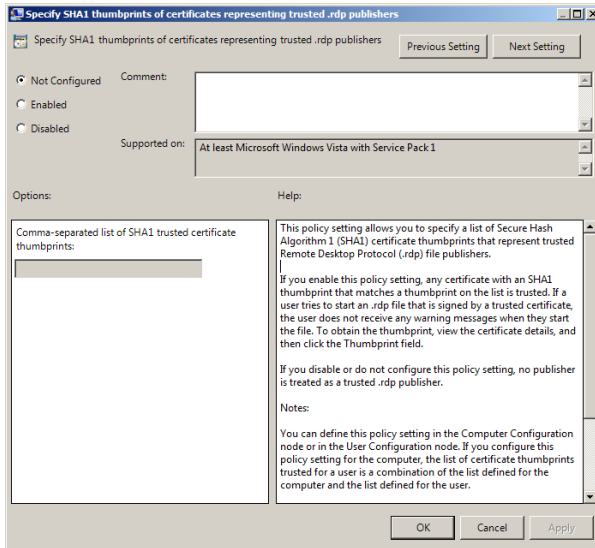
2. The Local Group Policy Editor opens.



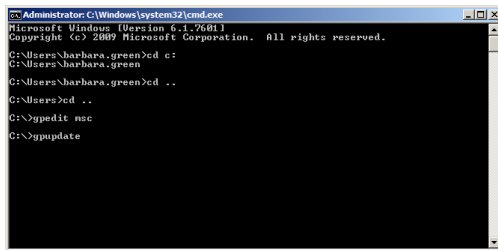
3. Navigate to: Administrative Template > Windows Components > Remote Desktop Services > Remote Desktop connection Client



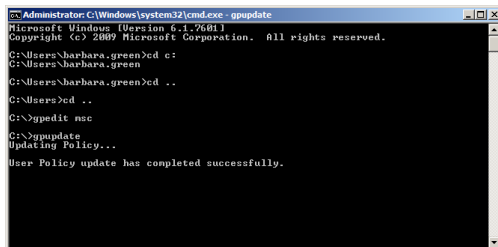
4. Double-click the setting labeled **Specify SHA1 thumbprints of certificates representing trusted RDP publishers**. A dialog for the setting opens.



5. Select the Enabled button and in the it and in the Options section, copy and past the following thumbprint:
2FA0DE22FED2BF2B141873BAEFFF01C07CC2B3AA
6. Click **OK** to confirm the settings, and close the Local Group Policy Editor window.
7. Return to the command window and type: **gpupdate**. Then press **Enter**.



8. When the group policy has successfully been updated, close the window.



Connecting to the Portal Using Internet Explorer

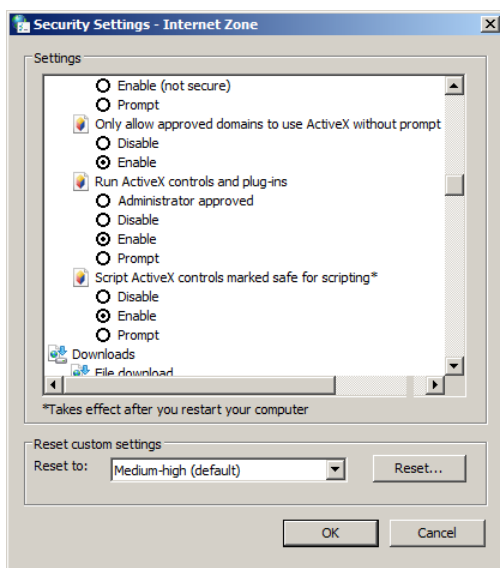
Use the information in this section to connect to Abila Nonprofit Online from an IE browser window. Before you can launch Abila Nonprofit Online from the browser, you must edit the security and privacy settings to establish the abilaonline.com as a trusted site and to allow ActiveX to run.

Note: The information in this section applies only if you are using Internet Explorer and the remote desktop protocol to connect to Abila Nonprofit Online. If you are using Windows 7 or later, or if you connect from an Apple computer or from a mobile device, use the instructions in [Connecting to the Portal Using a Remote Desktop Application](#).

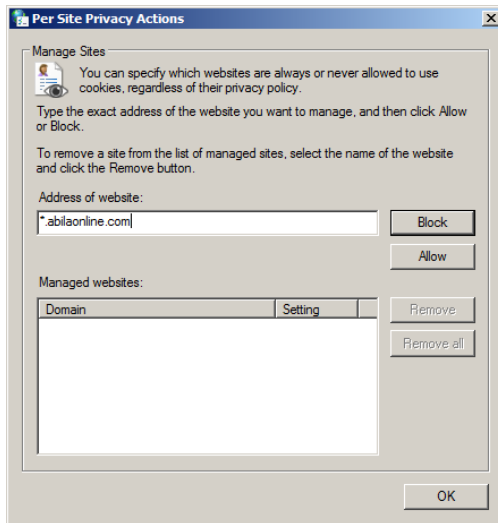
Setting IE Browser Options for Abila Nonprofit Online

Use the following steps to add the abilaonline.com domain as a trusted site for the IE browser and establish appropriate security settings:

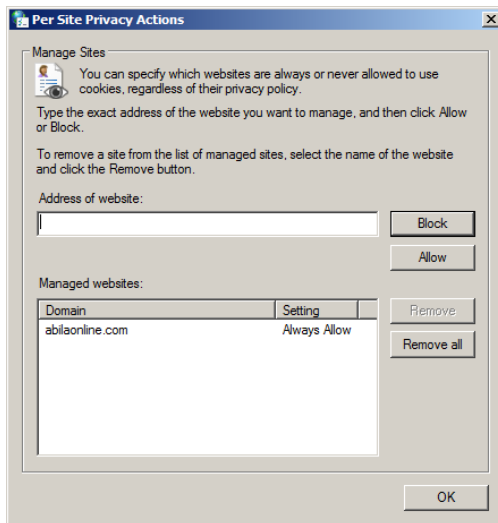
1. In the Windows Control Panel, select **Internet Options**.
2. Verify your ActiveX settings:
 - a. Select tab **Security** tab and click the **Custom Level** button.
 - b. Scroll down to the **Run ActiveX controls and plug-ins** setting. Set this option to **Enable** or **Prompt** if it is not already set to one of those values.



- a. Click **OK**. If prompted to confirm your change, click **Yes**.
3. Edit the browser Privacy settings to allow the abilaonline.com domain.
 - a. Select the **Privacy** tab and click the **Sites** button. The Per Sites Privacy Window form opens.

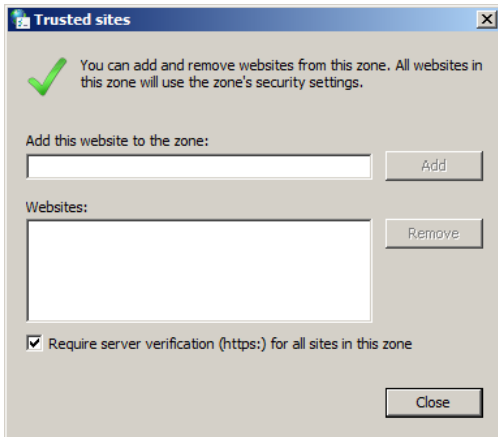


- b. Enter ***.abilaonline.com** in the **Address of website** field and click **Allow**.

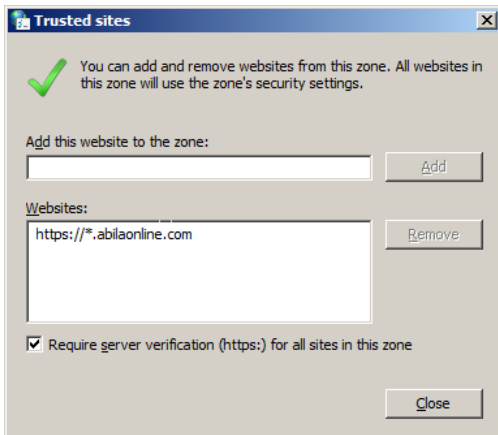


- c. Click **OK** to close the Per Site Privacy Actions form

4. Add the abilaonline.com domain to the IE trusted sites list:
 - a. Select the **Security** tab and click the **Trusted Sites** icon.
 - b. Click the **Sites** button to open the **Trusted Sites** form.



- c. Enter https://*.abilaonline.com in the **Add the website to the zone** field and click **Add**.



- d. Click **Close** to close the **Trusted Sites** form.
5. click **OK** to close the **Internet Properties** form.

Connecting to the Portal from the Browser

Use the following steps to connect to Abila Nonprofit Online using Internet Explorer:

.....
Note: If you IE Version 10 or later, remember to run the browser in Compatibility mode when you navigate to the Abila Nonprofit Online portal.
.....

1. In the browser window, navigate to <https://www.abilaonline.com>.
2. IE may prompt you to run Microsoft Remote Desktop Services Web Access add-on. Click **Allow** to run the add on.
3. Enter your **User Name** and **Password** and click **Sign In**. The Abila Nonprofit Online portal opens to display the applications that are available to you.

.....
Note: If you do not know your password, click the **Forgot Password?** link and follow the instructions to reset your password for the site.
.....

4. After you sign in, Abila Nonprofit Online displays the My Products page. Double-click an application to launch it from the portal.
5. If the RemoteApp alert appears, click **Connect** to allow the application to run. To disable the RemoteApp alert, follow the steps in [Setting a Group Policy to Prevent Remote Application Warnings](#).

Connecting to the Portal with a Remote Desktop Application

Use the instructions in this section to connect to Abila Nonprofit Online using the Microsoft Remote Desktop Client. The way you establish a remote desktop connection can vary depending on the operating system and device you are using to connect to the portal.

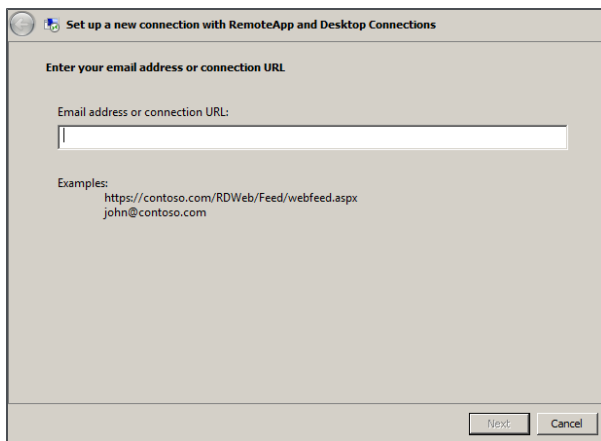
Note: If you plan to use the Microsoft Remote Desktop client application, the instructions in this section assume you have already obtained the application and are ready to install it. See [Obtaining the Microsoft Remote Desktop Client Application](#) for more information.

Setting Up the Native Remote Desktop Application (Windows 7)

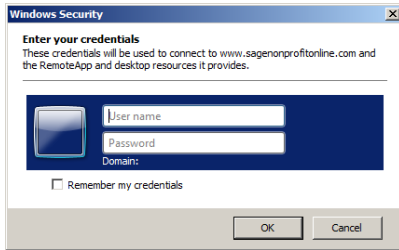
If your computer has a native Remote Desktop Application (for example, Windows Version 7), you can use the following steps to set up the Microsoft Remote Desktop client for Abila Nonprofit Online and launch the applications:

Note: The native Remote Desktop application is not the same thing as the Microsoft Remote Desktop Client. The Remote Desktop Client is only available for Windows Version 8 and later versions.

1. Open the Windows Control Panel and select the **RemoteApp and Desktop Connections** option.
2. Click Set up a new connection with RemoteApp and Desktop Connections. The setup wizard opens.



3. Enter the Abila Nonprofit Online URL: <https://www.abilaonline.com/rdweb/feed/webfeed.aspx>.
4. Click **Next**. The wizard displays the **Ready to set up the connection** panel.
5. Click **Next** again to proceed. The **Windows Security** form opens.



6. Enter your user name and password for Abila Nonprofit Online and click **OK**. If you do not know your credentials, contact your Professional Services representative.
7. The connection wizard builds the connection to Abila Nonprofit Online. This may take some time, depending on your network speed and traffic.
8. When the connection is successful, the wizard displays the connection settings. Click **Finish** to close the wizard.
9. To launch the Abila Nonprofit Online applications, select Windows Start menu>All Programs>RemoteApp and Desktop Connections>Abila Nonprofit Online, and choose the application you want to launch.
10. If the RemoteApp alert displays, click **Connect** to continue launching the application. To prevent the RemoteApp alert, follow the steps in [Setting a Group Policy to Prevent Remote Application Warnings](#).

Setting Up the Remote Desktop Client on a Windows Computer

If you have Windows Version 8 or later, you can use the Microsoft Remote Desktop Client to connect to Abila Nonprofit Online. Use the following steps to set up the client and launch the Abila applications:

1. Install the Microsoft Remote Desktop Connection Client on your computer.
2. Open the Microsoft Remote Desktop Connection Client.
3. Under **Configuration**, select **Remote Resources**.
4. In the **Server** field, enter the Abila Nonprofit Online URL:
<https://farm.abilaonline.com/rdweb/feed/webfeed.aspx>.
5. Enter your Abila Nonprofit Online credentials in the **User name** and **Password** fields. You may need to enter your **User name** in the format `hostname\User name`, where the host name is `abilaonline`.
6. Click **Save**.

7. The Remote Desktop client builds the connection to Abila Nonprofit Online. This may take some time, depending on your network speed and traffic.
8. To launch the Abila Nonprofit Online applications, select the application you want to use from the **Remote Resources** list.

Setting Up the Remote Desktop Client on an Apple Mac or iOS Mobile Device

If your computer is an Apple Mac, use the following steps to set up the Microsoft Remote Desktop client for Abila Nonprofit Online and launch the applications:

1. Install the Microsoft Remote Desktop Connection Client on your Mac or iOS device.
2. Open the Microsoft Remote Desktop Connection Client.
3. Under **Configuration**, select **Remote Resources**.
4. In the **Server** field, enter the Abila Nonprofit Online URL:
<https://farm.abilaonline.com/rdweb/feed/webfeed.aspx>.
5. Enter your Abila Nonprofit Online credentials in the **User name** and **Password** fields. You may need to enter your **User name** in the format **hostname\User name**, where the host name is **abilaonline**.
6. Click **Save**.
7. The Remote Desktop client builds the connection to Abila Nonprofit Online. This may take some time, depending on your network speed and traffic.
8. To launch the Abila Nonprofit Online applications, select the application you want to use from the **Remote Resources** list.

Setting Up the Remote Desktop Client on an Android Mobile Device

To use the Microsoft Remote Desktop Connection Client from an Android phone or tablet, use the following steps:

1. Install the Microsoft RD Client app on your Android device.
2. Open the Microsoft RD Client app.
3. Tap the toolbar menu at the top of the screen and select **Remote Resources**.
4. Tap the **Add** button (+) in the toolbar.
5. In the **URL** field, enter the Abila Nonprofit Online URL:
<https://farm.abilaonline.com/rdweb/feed/webfeed.aspx>,
6. Enter your Abila Nonprofit Online credentials in the **User name** and **Password** fields. You may need to enter your **User name** in the format **Domain\User name**, where the domain name is **abilaonline**.
7. Tap **Save**.
8. The Remote Desktop client builds the connection to Abila Nonprofit Online. This may take some time, depending on your network speed and traffic.
9. To launch the Abila Nonprofit Online applications, select **Remote Resources** from the toolbar menu and tap the application icon that you want to launch.